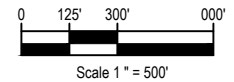
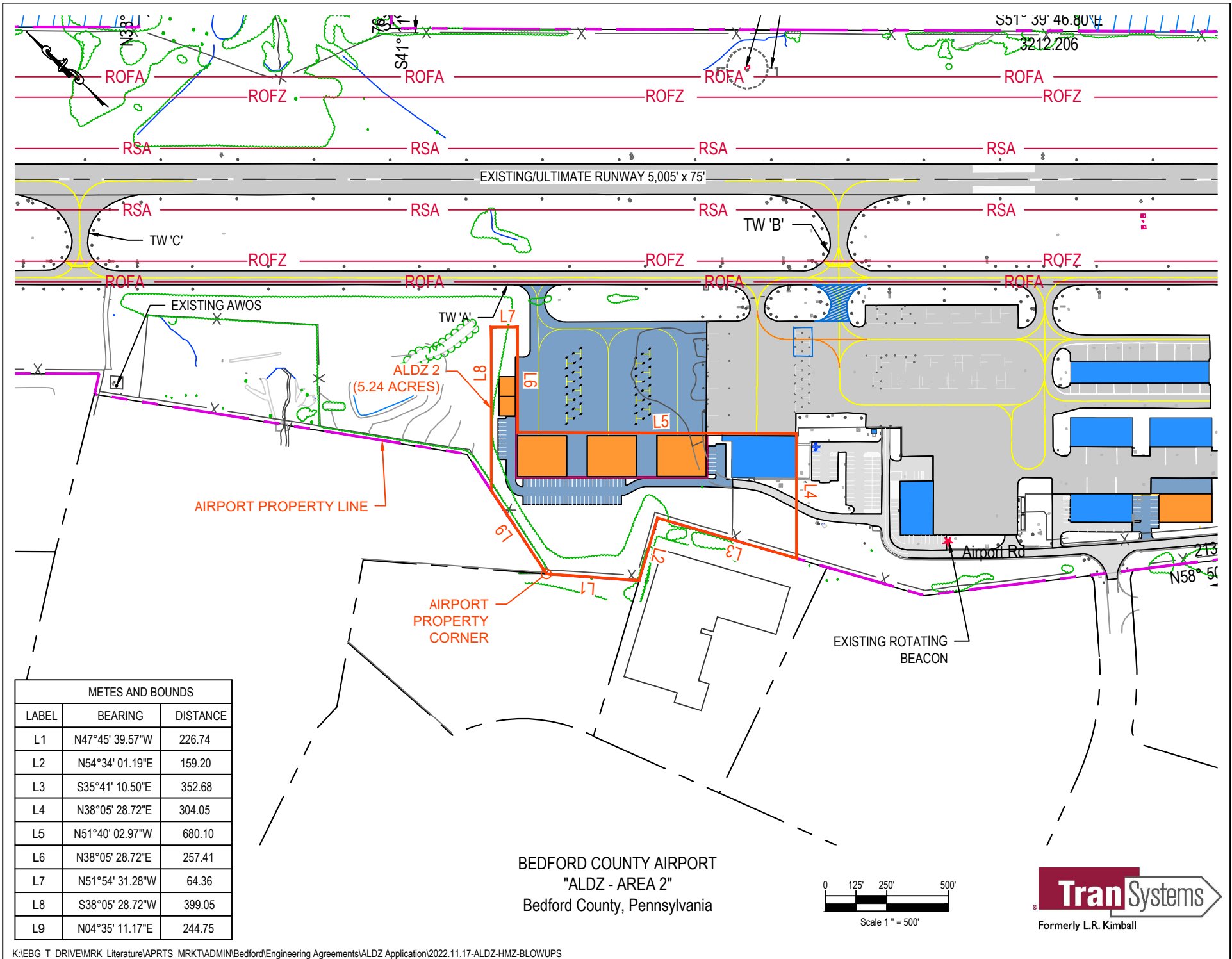


METES AND BOUNDS		
LABEL	BEARING	DISTANCE
L1	S71°44' 21.00"E	169.95
L2	S69°13' 08.00"E	313.88
L3	S64°41' 09.00"E	37.62
L4	S30°48' 33.00"E	63.51
L5	S06°23' 36.00"W	134.52
L6	S44°06' 57.77"W	22.13
L7	S38°06' 07.48"W	537.33
L8	S57°36' 30.65"E	681.33
L9	S32°23' 29.35"W	67.21
L10	N61°14' 46.61"W	857.49
L11	N01°08' 13.61"W	439.45
L12	N71°46' 11.00"W	88.03
L13	N18°07' 13.00"E	368.26

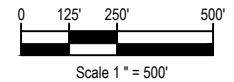
BEDFORD COUNTY AIRPORT
 "ALDZ - AREA 1"
 Bedford County, Pennsylvania

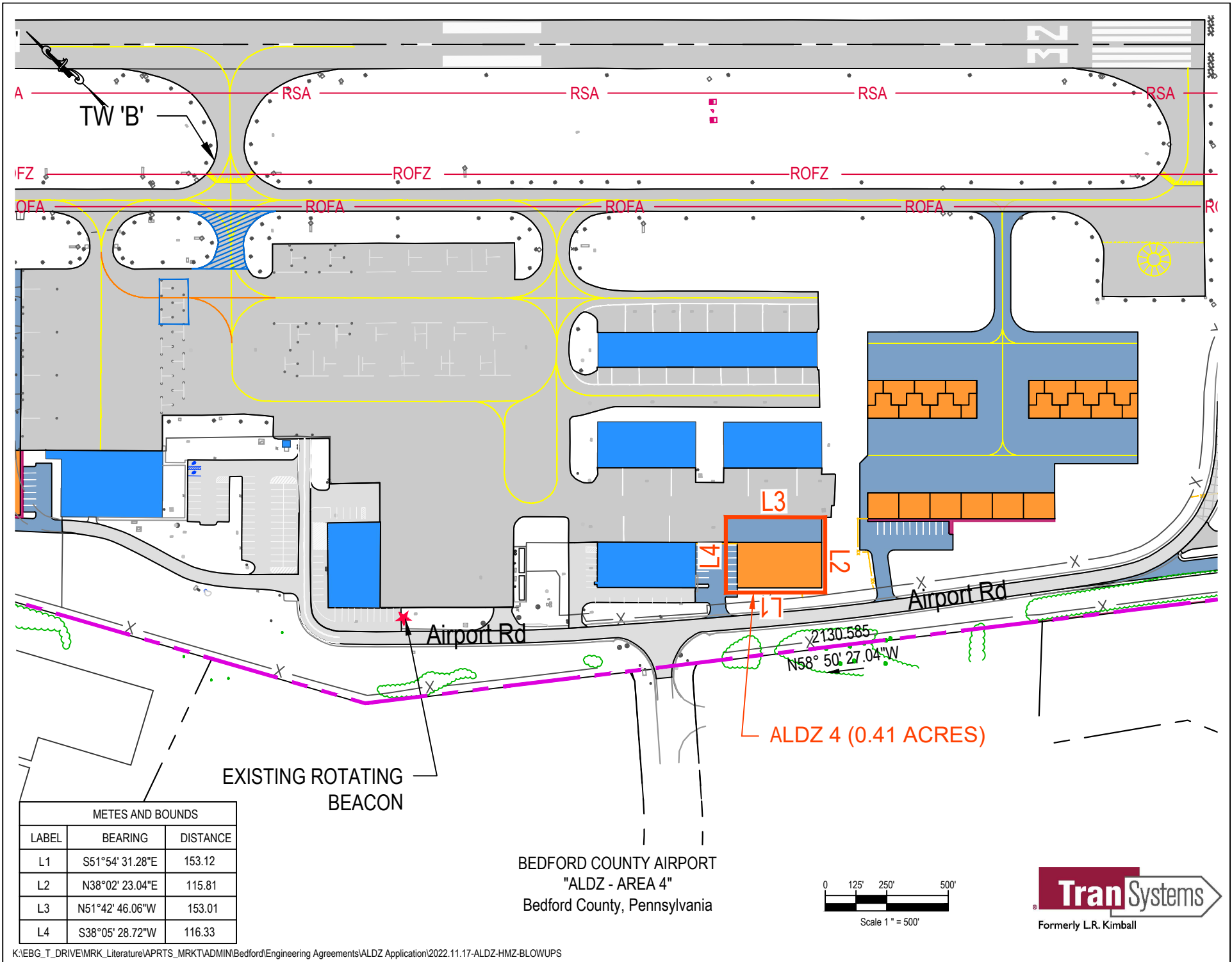




METES AND BOUNDS		
LABEL	BEARING	DISTANCE
L1	N47°45' 39.57"W	226.74
L2	N54°34' 01.19"E	159.20
L3	S35°41' 10.50"E	352.68
L4	N38°05' 28.72"E	304.05
L5	N51°40' 02.97"W	680.10
L6	N38°05' 28.72"E	257.41
L7	N51°54' 31.28"W	64.36
L8	S38°05' 28.72"W	399.05
L9	N04°35' 11.17"E	244.75

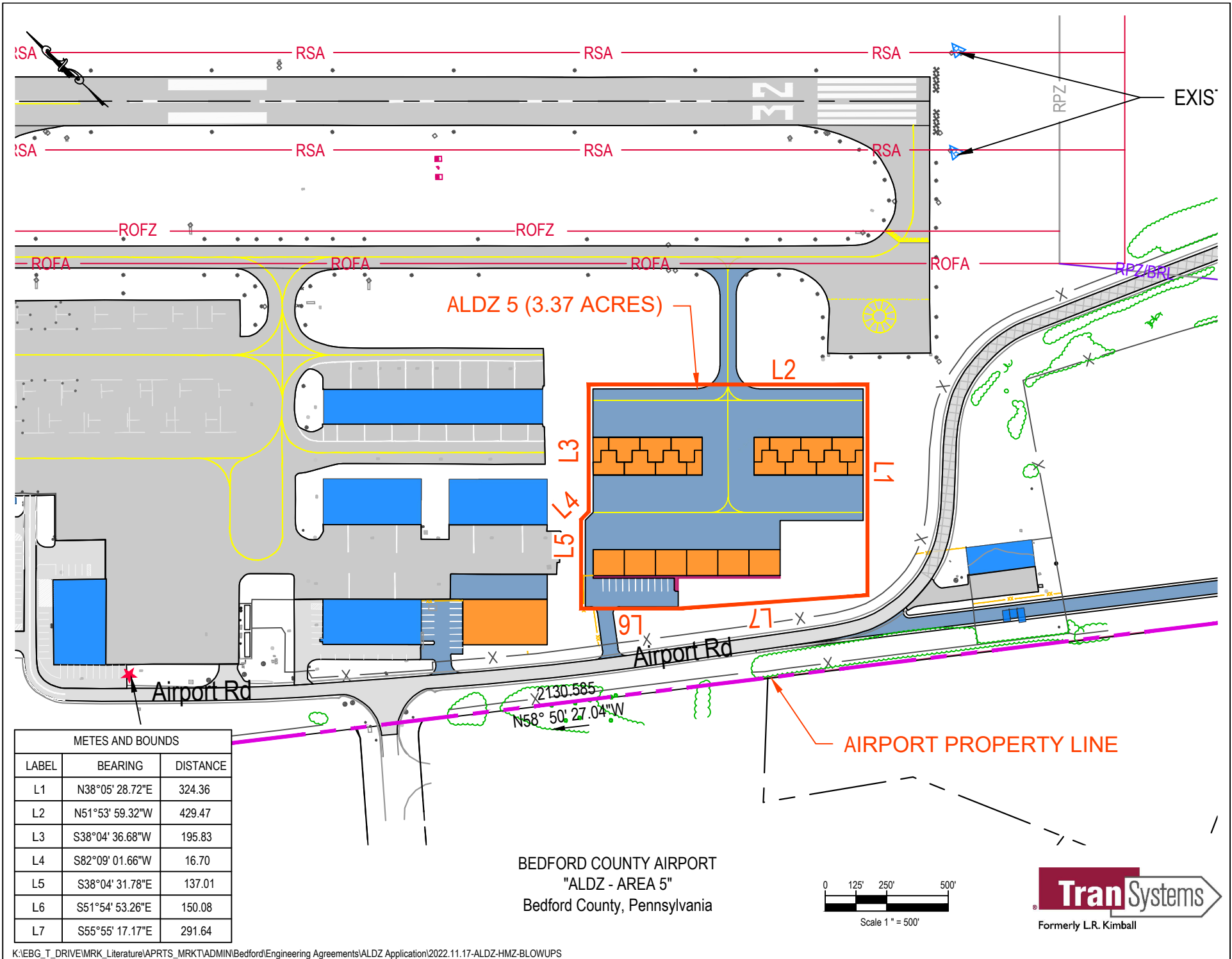
BEDFORD COUNTY AIRPORT
 "ALDZ - AREA 2"
 Bedford County, Pennsylvania





BEDFORD COUNTY AIRPORT
 "ALDZ - AREA 4"
 Bedford County, Pennsylvania





METES AND BOUNDS

LABEL	BEARING	DISTANCE
L1	N38°05' 28.72"E	324.36
L2	N51°53' 59.32"W	429.47
L3	S38°04' 36.68"W	195.83
L4	S82°09' 01.66"W	16.70
L5	S38°04' 31.78"E	137.01
L6	S51°54' 53.26"E	150.08
L7	S55°55' 17.17"E	291.64

BEDFORD COUNTY AIRPORT
 "ALDZ - AREA 5"
 Bedford County, Pennsylvania

